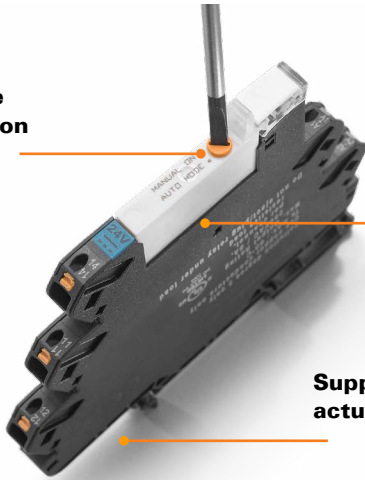


Lockable
test button



Universally
applicable

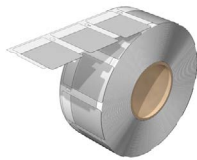
Supplementary
actuator version

TERMSERIES with Test Button

Q-Specials

4th Quarter 2022

QUOTATION #Q4-2022: Prices valid from Sep. 1st to Dec. 31st, 2022 while supplies lasts. Orders must be submitted to Weidmüller Canada with the quotation number Q4-2022 by Dec.31, 2022.



MultiMark THM WO-QX

<u>2711910000</u>	THM WO-Q VIN 25/19.1 WS THM Conductor and cable markers, 2 - 4 mm, 25 x 19.1 mm, white	Reg. \$15.05 \$9.06 per 100 labels
<u>2711930000</u>	THM WO-Q VIN 25/38.1 WS Conductor and cable markers, 4.9 - 9.8 mm, 25 x 38.1 mm, white	Reg. \$20.62 \$14.38 per 100 labels
<u>2711940000</u>	THM WO-Q VIN 25/51.4 WS Conductor and cable markers, 4.5 - 9 mm, 25 x 51.4 mm, white	Reg. \$21.84 \$13.75 per 100 labels
<u>2711970000</u>	THM WO-QX VIN 25/100 WS Conductor and cable markers, 12.2 - 24.4 mm, 25 x 100 mm, white	Reg. \$46.14 \$25.00 per 100 labels

THM WriteOn cable markers on reels are used for labelling conductors and cables with an outside diameter of up to 36 mm (1.4 inches).

- Protection of the marker against dirt and abrasion by wrapping it with the transparent adhesive strip
- Simple and quick printing with the high-quality thermal transfer printer comes with a wide operating temperature range of -40°C to 80°C



RockStar® heavy duty connectors kits

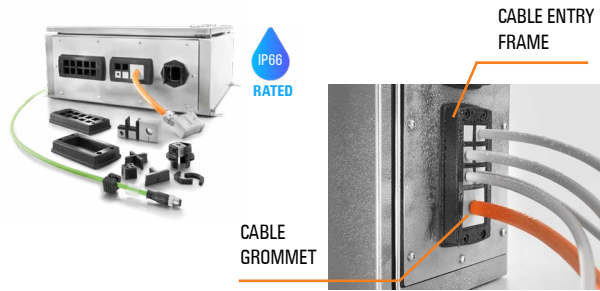
<u>1712510000</u>	HDC-KIT HE 10.110 Side Entry PG16 HDC kits HE, Size: 4, Poles: 10, Screw connection, 500 V, 16 A, diecast aluminium	Reg. \$62.33 \$46.88
<u>1712460000</u>	HDC-KIT-HE 06.100 Side Entry PG16 HDC kits Size: 3, Poles: 6, Screw connection, 500 V, 24 A, diecast aluminium	Reg. \$48.45 \$36.25
<u>1712520000</u>	HDC-KIT-HE 16.120 Side Entry PG21 HDC kit Size: 6, Poles: 16, Screw connection, 500 V, 16 A, diecast aluminium	Reg. \$64.97 \$48.75

HDC kits are standardized kits for assembling complete plug-in connectors. The HDC kits consist of a male insert, a female insert, a plug housing, a bulkhead housing and a cable gland. Weidmüller offers a wide range of different connector combinations with metric or PG cable entry threads and screw connection or PUSH IN connection.

Contact us:

1.800.268.4080

orders_can@weidmueller.com



Cabtite system

2584240000	CABTITE FR 10/6 BK Locking frame	Reg. \$9.05 \$7.25
2583740000	CABTITE FR 16/8 BK SET Cable entry frame set	Reg. \$60.40 \$46.25
2583350000	CABTITE BSE SML GY Cable grommet - sealing element	Reg. \$2.90 \$2.25
2583460000	CABTITE SE 6-7 SML GY Cable grommet - Outer cable diameter: max 7 mm	Reg. \$2.90 \$2.25
2583450000	CABTITE SE 5-6 SML GY Cable grommet - Outer cable diameter: max 6 mm	Reg. \$3.93 \$3.00
2584900000	CABTITE SE 2/4-5 SML GY Cable grommet - Outer cable diameter: max 5 mm, dual cable entry	Reg. \$3.93 \$3.00
2584890000	CABTITE SE 2/5-6 SML GY Cable grommet - Outer cable diameter: max 6 mm, dual cable entry	Reg. \$3.93 \$3.00

The Cabtite cable entry system offers secure sealing and strain relief for pre-terminated and unterminated cables.

Cabtite's modular design of frame, grid inlays and sealing elements enables rapid configuration of cut-outs for pre-terminated cables - without the use of tools and with a reliable sealing of IP66 according to DIN EN 60529.



Klippon® POK enclosures

1305890000	KLIPPON POK 161609 Polyester empty enclosure 160mm x 160mm x 90mm	Reg. \$111.76 \$81.25
1305880000	KLIPPON POK 122209 Polyester empty enclosure 120mm x 220mm x 90mm	Reg. \$67.58 \$56.25
1305910000	KLIPPON POK 163609 Polyester empty enclosure 160mm x 360mm x 90mm	Reg. \$267.60 \$200.00
1305930000	KLIPPON POK 252512 Polyester empty enclosure 250mm x 250mm x 120mm	Reg. \$191.31 \$137.50

The Klippon® POK enclosure range is made from a high-quality glass fibre reinforced polyester and is ideal for applications and environments where corrosion resistance, impact resistance and a high IP protection class are a requirement.

- Impact resistance up to 7 Joules
- Mounting directly in the enclosure or using an internal mounting plate
- Direct wall mounting possible using fixing holes or mounting feet
- Two standard finishes (colours): grey for industrial use and black for Ex required environments ([Click here to check the availability on our online catalogue](#))
- Weidmuller can manufacture and supply this enclosure to match customer specifications - fitted with all necessary



Crimp sets and Tool pouch

9204600000	WZTE 20 LR Tool pouch	Reg. \$37.34 \$26.25
9204610000	WZTE 20 LR Tool pouch belt	Reg. \$13.12 \$8.13
2561430000	P BAG SET 1 Weidmuller crimp set #1	Reg. \$441.83 \$337.50
2579420000	P BAG SET 3 Weidmuller crimp set #3	Reg. \$461.14 \$350.00
2579440000	P BAG SET 5 Weidmuller crimp set #5	Reg. \$706.65 \$437.50

Workshops and factories prefer well-organised sets of tools. This results in minimal searching and preparation, and that saves money. Weidmuller Crimp Sets for cutting, stripping and crimping wire end ferrules provide users with practical toolkits.

Prices valid from Sep. 1st to Dec. 31st, 2022 while supplies last. Orders must be received by Weidmuller by this date. Orders must be sent to an authorized Weidmuller distributor. Orders must reference quotation number Q4-2022. Please note that all prices (Regular Price and Special Price) are suggested prices in CAD and valid for customers and distributors in Canada only. Image is for illustrative purposes only, please refer to product description. We reserve the right to make technical changes.

Featured Products

Klippon® Relay - TERMSERIES relay modules with test button

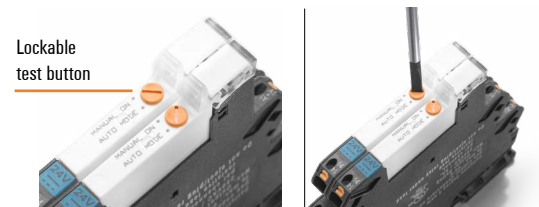
Facilitate maintenance and commissioning with manual operability

In many situations it is important to perform test processes as quickly and easily as possible. Relay modules from the TERMSERIES are now also available with a test button and offer a high level of practical benefit.

With the manually lockable test button, input or output signals can be simulated easily. In this way, machines and systems can be tested step by step during commissioning and maintenance. The orange test button is immediately recognisable and easy to operate. TERMSERIES relay modules with test button expand our proven TERMSERIES product family. They are compatible with TERMSERIES accessories and can be supplemented with interface adapters, cross-connections, and partition plates.

Your special advantages:

- Lockable test button
- Supplementary actuator version
- Universally applicable



Read more: [TERMSERIES with test button](#) >

PRObas Power Supplies



NEC CLASS 2

A safe and stable DC supply voltage is at the heart of many automation applications. The single-phase switched-mode power supply units of the PRObas series meet the high requirements of industry automation in a cost-effective way.

High performance, compact design and a good price-performance ratio are the main characteristics of the new PRObas power supplies. The product family comprises 12 variants with 5, 12, 24 or 48 V DC output voltage and a wide-range input. All units have comprehensive safety functions and are internationally approved. Due to compatibility with our electronic fuses, DC UPS and diode modules, they are also suitable for setting up power management systems.

Features and Characteristics:

- Reliable with basic functionality
- Broad product range from 30 W to 480 W for all DC voltage levels
- Compact design from 23 mm to 59 mm width
- High efficiency up to 96% and long lifetime expectancy
- Various international approvals and marks
- CE, CB Scheme, cULus (UL61010-1 & UL 61010-2-201), cCSAus(UL62368-1), NEC Class 2 (up to 90W variants)
- High-cost efficiency with strong performance and compact design
- Universal use due to wide range of variants and international approvals (e.g. cULus, NEC Class2 and cCSAus)
- Flexible mounting, either on mounting rails or directly screwed to the cabinet wall

Read more: [PRObas datasheet](#) >

Weidmuller Ltd.

10 Spy Court Markham ON Canada L3R 5H6 | Toll Free: (800)268-4080

ISO 9001:2015 Registered

Let's connect



09/22 CA | LIT 1015